



**ICE WaRM**  
International Centre of Excellence  
in Water Resources Management

# 5th HEC-RAS WATER MODELLING

**Monday 11th September to Friday 15th September, 2017 | Brisbane, Australia**

HEC-RAS is recognised as an industry-standard hydraulic modelling program that is widely used throughout the world. Using the latest version of HEC-RAS (5.0) this week-long workshop will cover basic, intermediate and advanced levels across both 1D and 2D. You will learn to build, run, and animate flood models using the free HEC-RAS software. The new version includes two-dimensional floodplain modelling, unsteady sediment transport, bank erosion, water quality, and the RAS Mapper GIS interface.

## Workshop Chair



### Krey Price Surface Water Solutions

*Krey is one of the world's leaders  
in computational modelling &  
engineering design*

### Joining Krey are:

Robert Keller,  
Monash University  
& Mark Forest, HDR  
Engineering

*This week consists  
of five courses, run  
consecutively, and  
you can attend  
any combination  
of courses with  
respect to your level  
of experience and  
understanding.*

## Who should attend?

### People working in:

- Private, public and consulting agencies
- Local, State and Commonwealth Government agencies
- Engineering, environment, agriculture, farming, irrigation, mining
- Education and research sectors
- Water authorities and power utilities

## What's included

- Presentations by experienced water professionals
- Course notes - hard copy and electronic
- Tutorials, discussions
- Linking with other industry professionals
- Small group size to allow greater interaction
- Catering: lunch, morning and afternoon teas

## Early bird special!

If you register by Monday 14th August you will receive a 20% discount on fees

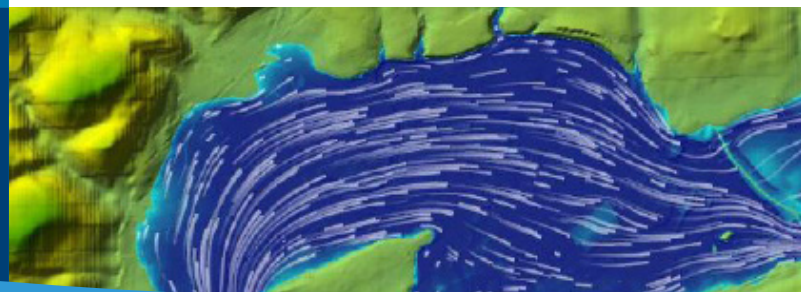
**REGISTER NOW**

## What will we learn?

- Understand the methods used by HEC-RAS software in modelling channel and flood plain storage
- Undertake hands-on HEC-RAS modelling exercises with full instruction
- Know when it is appropriate to build an expensive model and when back-of-envelope will do

## What will be covered?

- Open Channel Hydraulics & Introduction to HEC-RAS
- One Dimensional Flow Profiles in Context
- Cross Section Locations & Friction Slope Options
- Bridge Analysis and Modelling
- 1D, 2D and Coupled 1D/2D Floodplain Modelling
- Introduction to Sediment Transport Modeling





**ICE WaRM**

International Centre of Excellence  
in Water Resources Management

## For more information

**Trevor Pillar**

[training@icewarm.com.au](mailto:training@icewarm.com.au) | (08) 8236 5211

## Presenters include:



### **Krey Price, Surface Water Solutions**

Krey is a widely experienced hydraulic engineer whose career includes 15 years developing hydraulic models for the U.S. Army Corps of Engineers. Krey has recently completed and presented benchmarking studies comparing the results of HEC-RAS 5.0 to other industry-standard hydraulic models for Australian river systems. Krey's specialties include: 2D hydraulic modelling, bridge and culvert replacement, bank stabilisation, landform design, mine closure, coastal engineering, river mechanics, environmental restoration, geomorphic design, fish passage, and dam decommissioning.



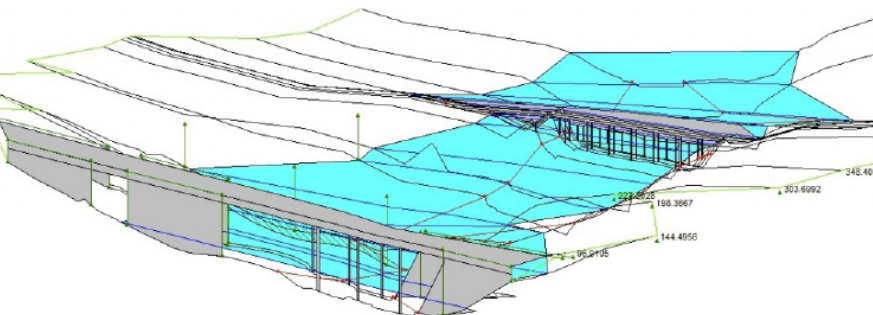
### **Mark Forest, HDR Engineering**

Mark has over 34 years of experience in water resources engineering, specialising in flood control planning and design, floodplain management, rainfall/runoff modelling, hydraulic modelling, dam breach analysis, and alluvial fan modelling. Mark has also conducted numerous hydrologic and hydraulic modelling and floodplain management training courses, including HEC-RAS 2D analysis for individual clients and technical society conferences.



### **Robert Keller, Monash University**

Robert has over thirty years of experience in Civil Engineering Hydraulics his main areas of expertise are: Open channel flow, flood plain hydraulics, physical and numerical modelling, sediment transport, hydraulic structures, urban hydraulics. He has carried out many flood studies using the HEC-RAS program and has conducted many training courses in the use of HEC-RAS.



## Day 1

The first day is designed for those who wish to develop an understanding of flow profile modelling and basic use of the HEC-RAS model

- **Introduction**
- **Basic open flow channel hydraulics**
- **Principles of water surface profiles computation**

## Day 2

Designed for those who already have a basic understanding of flow profile modelling and wish to extend their knowledge to solve more complex design problems

- **Junction analysis, split flow modelling**
- **Bridge and culvert modelling**

## Day 3

This day assumes a rudimentary prior knowledge of one-dimensional unsteady HEC-RAS modelling and is intended to prepare participants to construct and run 2D models.

- **Introduction to 2D**
- **Terrain development**
- **Mesh development**
- **Boundary conditions**
- **Computational options**

## Day 4

This day assumes a rudimentary prior knowledge of one-dimensional unsteady HEC-RAS modelling and is intended to prepare participants to construct and run 2D models.

- **Direct Rainfall**
- **Dam Breach**
- **Creating & refining 2D flow areas**
- **RAS Mapper & GIS interfacing**

## Day 5

This day assumes a rudimentary prior knowledge of 2D HEC-RAS modelling and is intended to prepare participants to view, troubleshoot, and interpret 2D models and combined 1D/2D models

- **Viewing 2D output & results**
- **Creating & refining inline 2D areas**
- **Troubleshooting & reviewing 2D models**
- **2D model calibration**
- **HEC-RAS 5.0 vs other 2D models**
- **Creating a 2D model from scratch**