

Wave modelling with SWAN

Course outline 2024

This course focusses on wave modelling; including theory, analytical calculations, numerical modelling and physical modelling. It will introduce the standards, best-practise guidelines and how to perform simple checks. It includes several hands-on tutorials, including step-by-step guidance to develop a wave model for Savusavu; a coastal town located in Fiji.

This course is targeted at early-stage practitioners, designers, assessors and Councils to better understand the numerical wave model SWAN and how it can be used for coastal assessments.

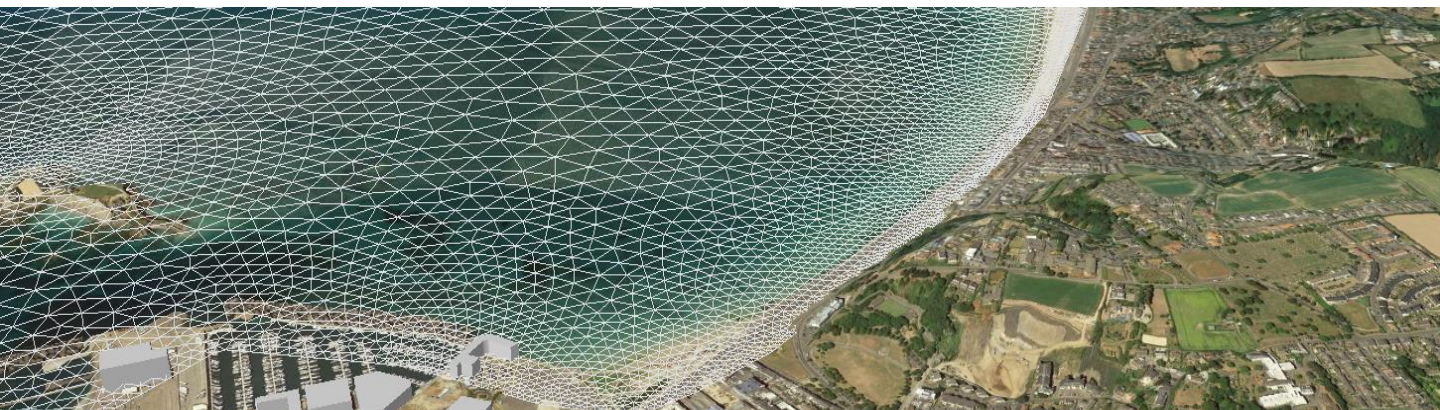
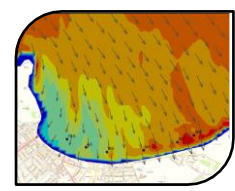
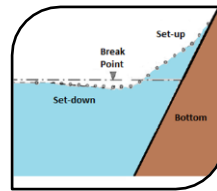
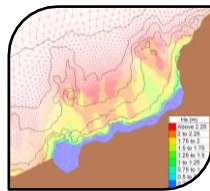
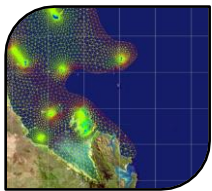
Our course includes:

- The theory of waves
- Sources of uncertainty
- Tutorial on setting up SWAN control files
- Grid generation and assigning bathymetry
- Selection of boundary conditions and simulation parameters
- Model calibration and validation
- Viewing and interpreting results

Enrol today!



In collaboration with **aws** Australian Water School



3 x 2 hr sessions



<https://awschool.com.au/training/swan-wave-modelling>