



# Tom Vanderbyl



Australia's National  
Science Agency

## An assessment of the historic Bradfield Scheme to divert water inland from north Queensland

A technical report to the National Water Grid Authority from the  
CSIRO Bradfield Scheme Assessment

Petheram C<sup>1</sup>, Read A<sup>1</sup>, Hughes J<sup>1</sup>, Stokes C<sup>1</sup>, Philip S<sup>1</sup>, Peake A<sup>1</sup>, Marvanek S<sup>1</sup>, Yang A<sup>1</sup>, Devlin K<sup>2</sup>,  
Rogers L<sup>1</sup>, Wilson P<sup>1</sup>, Baynes F<sup>3</sup>, Podger G<sup>4</sup>, Macintosh A<sup>5</sup>, Stratford D<sup>1</sup>, Potter N<sup>1</sup>, Kim S<sup>1</sup>,  
Tredger R<sup>6</sup>, Barber M<sup>1</sup>, Wang B<sup>1</sup>, McLannet D<sup>1</sup>, Jarvis D<sup>7</sup>, Vanderbyl T<sup>8</sup>, Watson I<sup>1</sup> and Chilcott C<sup>1</sup>

<sup>1</sup> CSIRO, <sup>2</sup> Independent consultant, <sup>3</sup> Baynes Geologic, <sup>4</sup> Water Bublu, <sup>5</sup> Australian National University, <sup>6</sup> SMEC, <sup>7</sup> James Cook University, <sup>8</sup> Badu Advisory



Australia's National  
Science Agency

## An assessment of contemporary variations of the Bradfield Scheme

A technical report to the National Water Grid Authority from the  
CSIRO Bradfield Scheme Assessment

Petheram C<sup>1</sup>, Read A<sup>1</sup>, Hughes J<sup>1</sup>, Marvanek S<sup>1</sup>, Stokes C<sup>1</sup>, Kim S<sup>1</sup>, Philip S<sup>1</sup>, Peake A<sup>1</sup>, Podger G<sup>2</sup>,  
Devlin K<sup>3</sup>, Hayward J<sup>4</sup>, Bartley R<sup>1</sup>, Vanderbyl T<sup>5</sup>, Wilson P<sup>1</sup>, Pena Arancibia J<sup>1</sup>, Stratford D<sup>1</sup>, Watson  
I<sup>1</sup>, Austin J<sup>1</sup>, Yang A<sup>1</sup>, Barber M<sup>1</sup>, Ibrahim T<sup>1</sup>, Rogers L<sup>1</sup>, Kuhnert P<sup>1</sup>, Wang B<sup>1</sup>, Potter N<sup>1</sup>, Baynes F<sup>3</sup>,  
Ng S<sup>1</sup>, Cousins A<sup>1</sup>, Jarvis D<sup>6</sup> and Chilcott C<sup>1</sup>

<sup>1</sup> CSIRO, <sup>2</sup> Water Bublu, <sup>3</sup> Independent consultant, <sup>4</sup> Badu Advisory, <sup>5</sup> Baynes Geologic, <sup>6</sup> James Cook University





# Interconnected regional grids



Australia's National  
Science Agency

## An assessment of the historic Bradfield Scheme to divert water inland from north Queensland

A technical report to the National Water Grid Authority from the  
CSIRO Bradfield Scheme Assessment

Petheram C<sup>1</sup>, Read A<sup>1</sup>, Hughes J<sup>1</sup>, Stokes C<sup>1</sup>, Philip S<sup>1</sup>, Peake A<sup>1</sup>, Marvanek S<sup>1</sup>, Yang A<sup>1</sup>, Devlin K<sup>2</sup>,  
Rogers L<sup>1</sup>, Wilson P<sup>1</sup>, Baynes F<sup>3</sup>, Podger G<sup>4</sup>, Macintosh A<sup>5</sup>, Stratford D<sup>1</sup>, Potter N<sup>1</sup>, Kim S<sup>1</sup>,  
Tredger R<sup>6</sup>, Barber M<sup>1</sup>, Wang B<sup>1</sup>, McLannet D<sup>1</sup>, Jarvis D<sup>7</sup>, Vanderbyl T<sup>8</sup>, Watson I<sup>1</sup> and Chilcott C<sup>1</sup>

<sup>1</sup> CSIRO, <sup>2</sup> Independent consultant, <sup>3</sup> Baynes Geologic, <sup>4</sup> Water Bublu, <sup>5</sup> Australian National University, <sup>6</sup> SMEC, <sup>7</sup> James Cook University, <sup>8</sup> Badu Advisory



Australia's National  
Science Agency

## An assessment of contemporary variations of the Bradfield Scheme

A technical report to the National Water Grid Authority from the  
CSIRO Bradfield Scheme Assessment

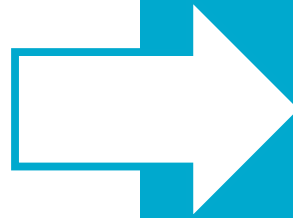
Petheram C<sup>1</sup>, Read A<sup>1</sup>, Hughes J<sup>1</sup>, Marvanek S<sup>1</sup>, Stokes C<sup>1</sup>, Kim S<sup>1</sup>, Philip S<sup>1</sup>, Peake A<sup>1</sup>, Podger G<sup>2</sup>,  
Devlin K<sup>3</sup>, Hayward J<sup>1</sup>, Bartley R<sup>1</sup>, Vanderbyl T<sup>4</sup>, Wilson P<sup>1</sup>, Pena Arancibia J<sup>1</sup>, Stratford D<sup>1</sup>, Watson  
I<sup>1</sup>, Austin J<sup>1</sup>, Yang A<sup>1</sup>, Barber M<sup>1</sup>, Ibrahim T<sup>1</sup>, Rogers L<sup>1</sup>, Kuhnert P<sup>1</sup>, Wang B<sup>1</sup>, Potter N<sup>1</sup>, Baynes F<sup>5</sup>,  
Ng S<sup>1</sup>, Cousins A<sup>1</sup>, Jarvis D<sup>6</sup> and Chilcott C<sup>1</sup>

<sup>1</sup> CSIRO, <sup>2</sup> Water Bublu, <sup>3</sup> Independent consultant, <sup>4</sup> Badu Advisory, <sup>5</sup> Baynes Geologic, <sup>6</sup> James Cook University

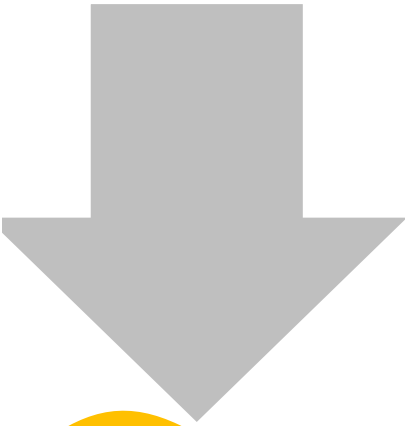




Interconnected  
regional grids



An over-arching  
**master plan**  
for bulk water  
infrastructure




Reliable water is a  
serious constraint to  
growth and survival of  
agriculture



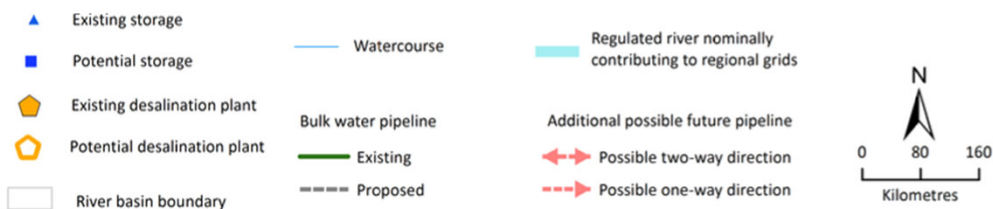
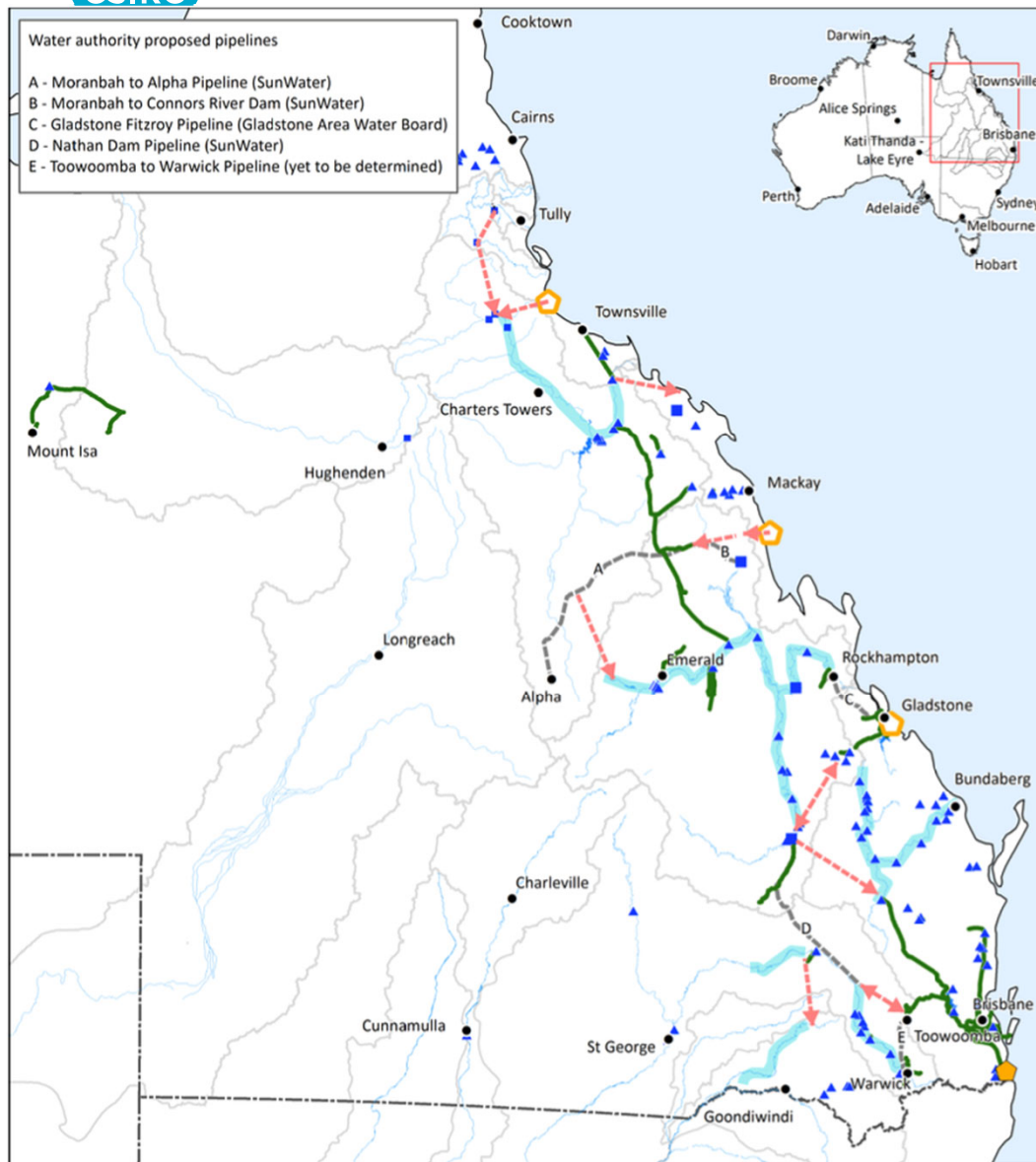
*Climate variability and change*

Water supply security is  
needed to support  
growing urban and  
industrial water demands

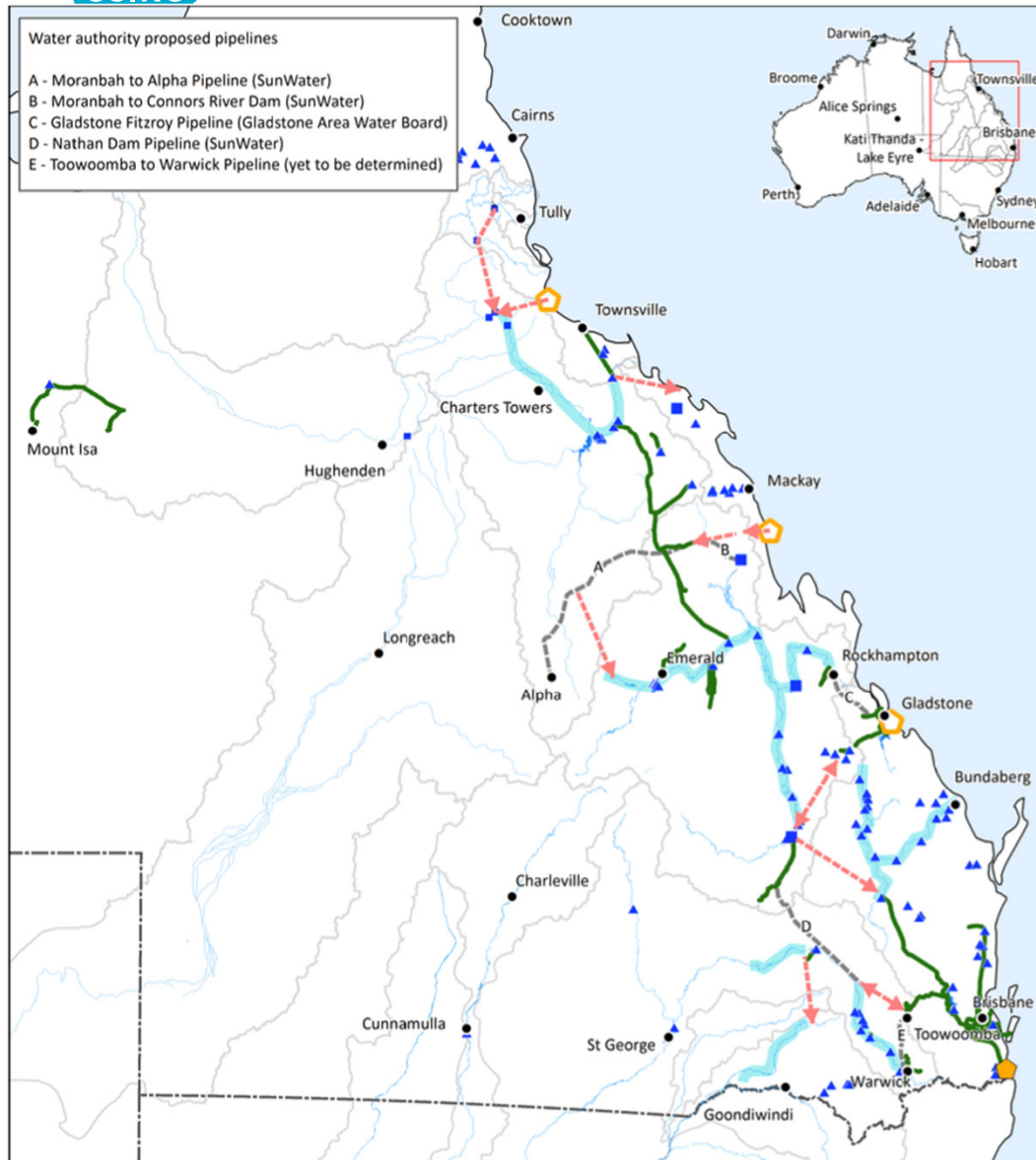


An over-arching  
**master plan**  
for bulk water  
infrastructure

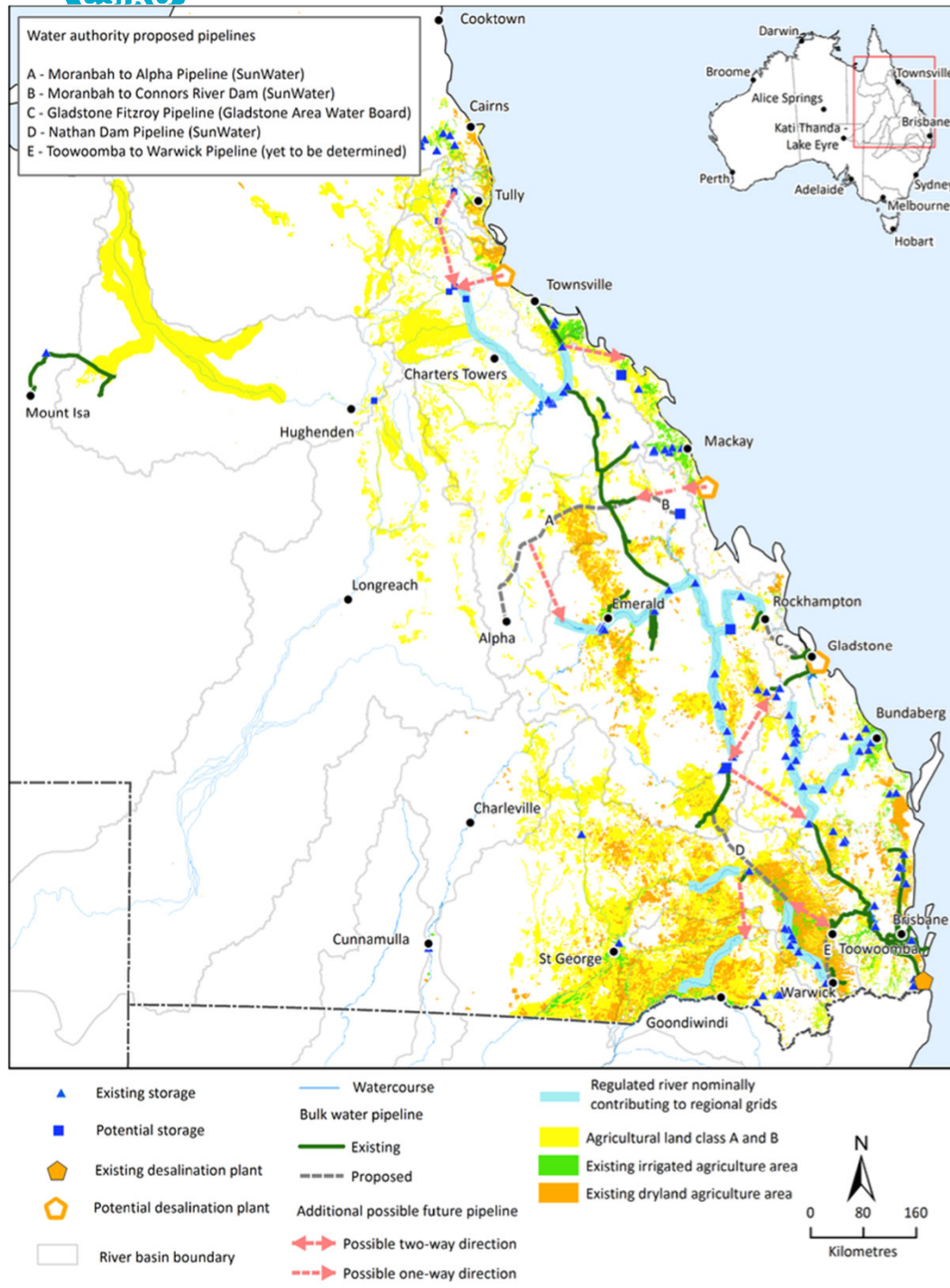




# Regional networks of interconnected nodes and links

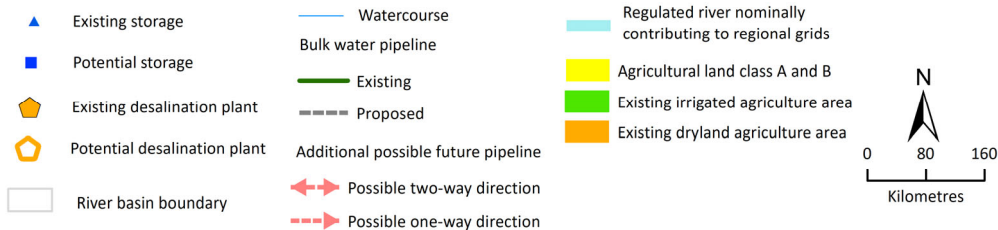
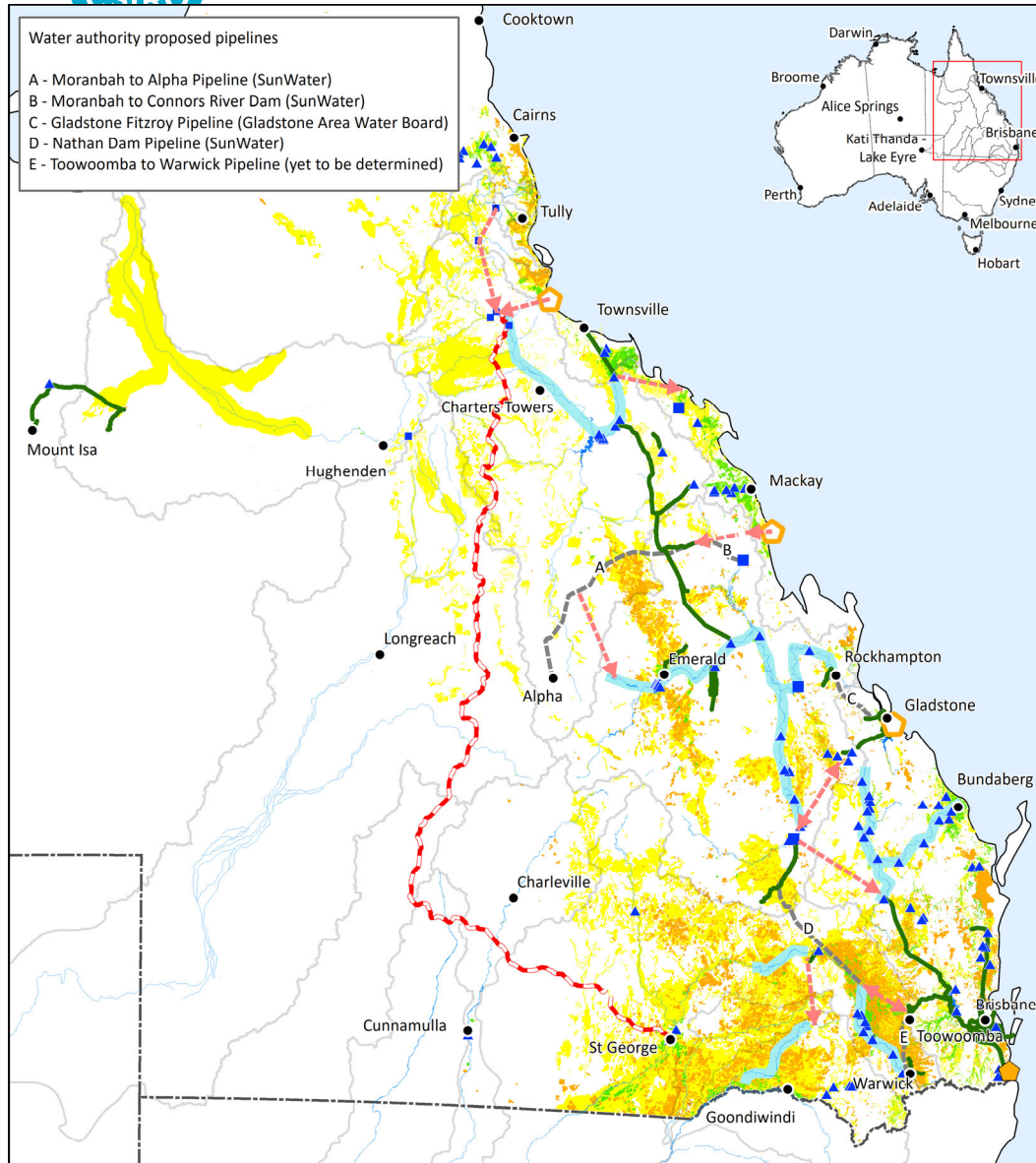


# Master plan as part of an assessment framework

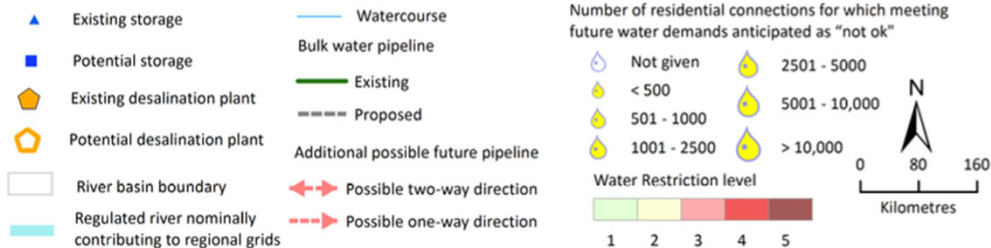
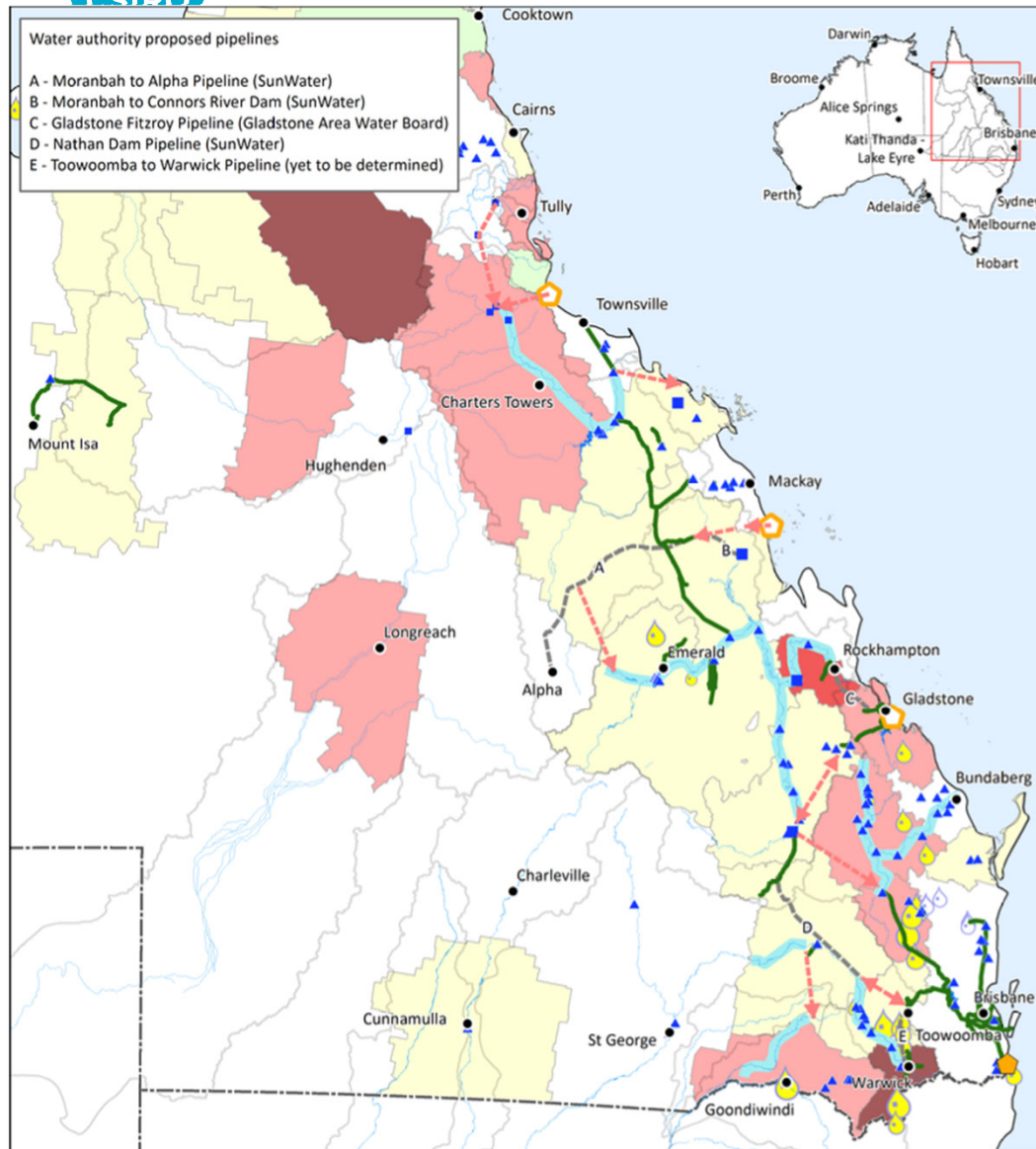


# Regional grids and irrigated agriculture

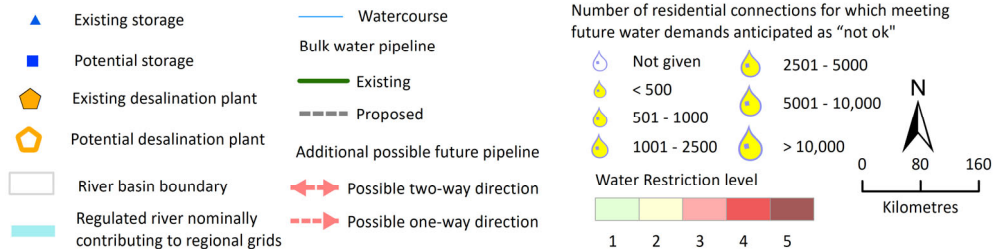
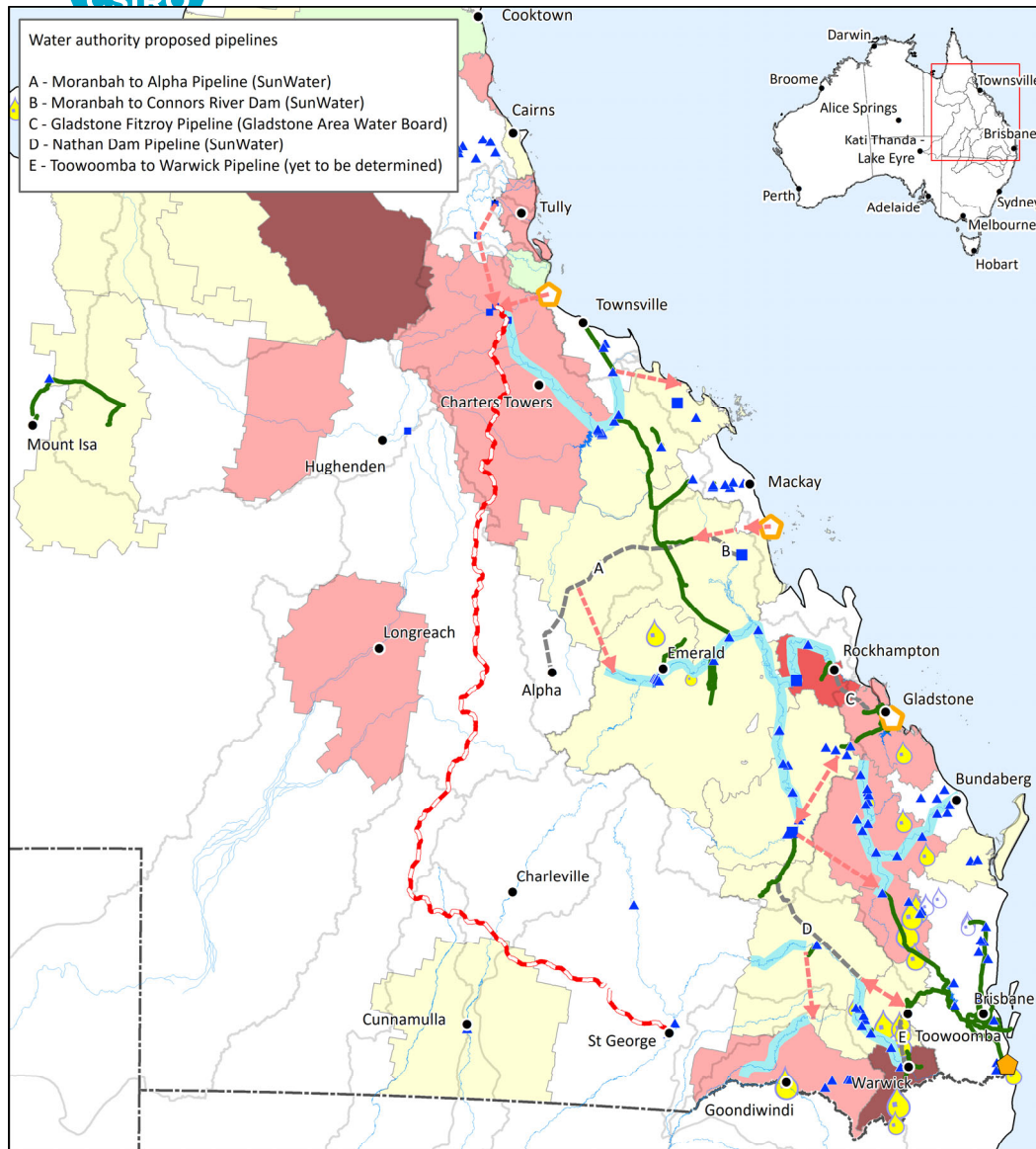




# Regional grids and irrigated agriculture

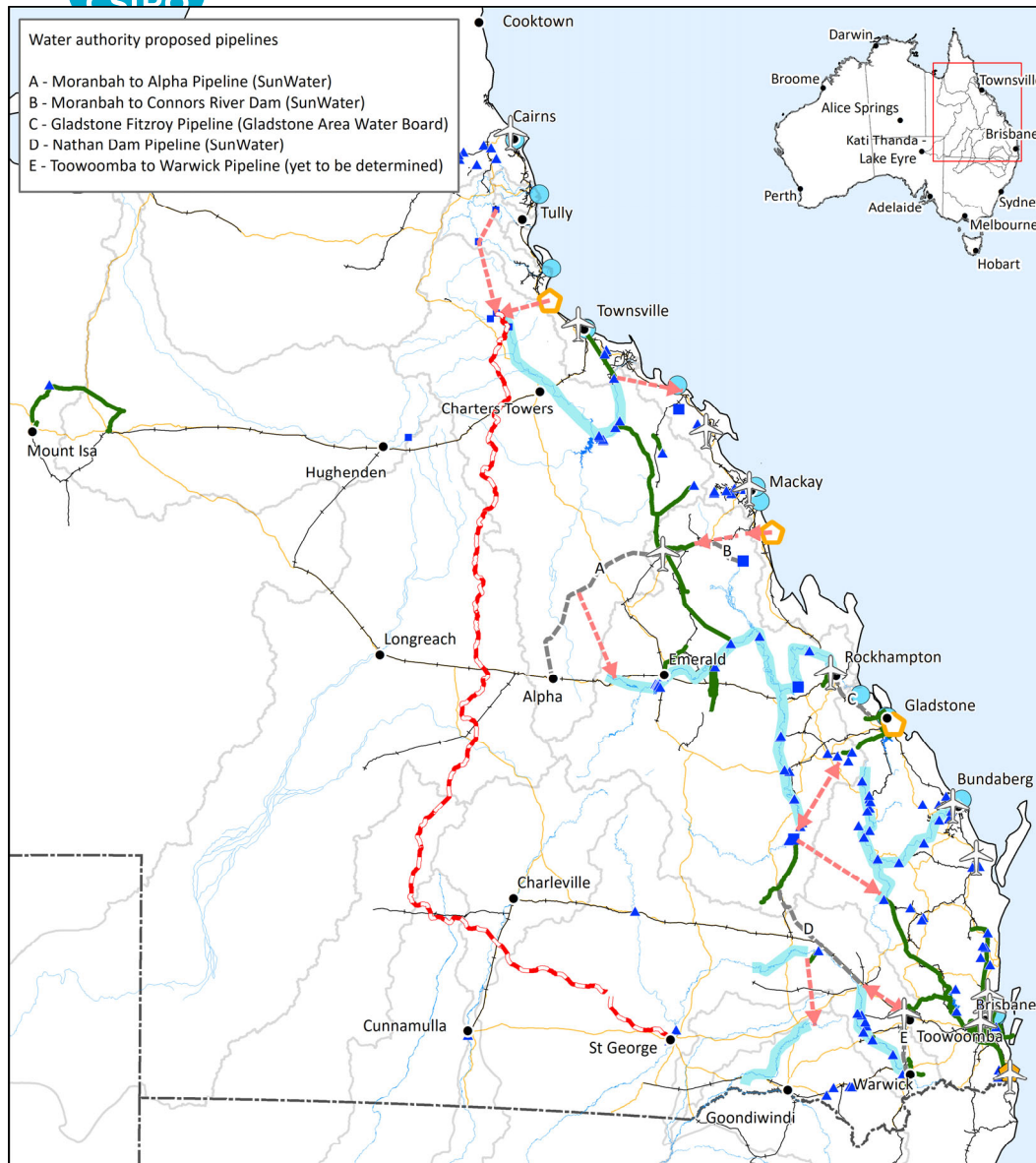


# Regional grids and urban/industrial water security

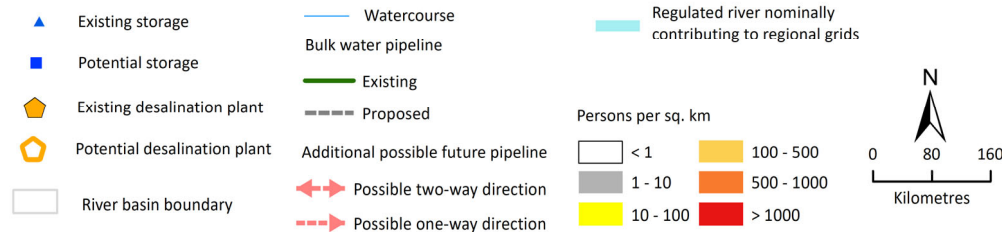
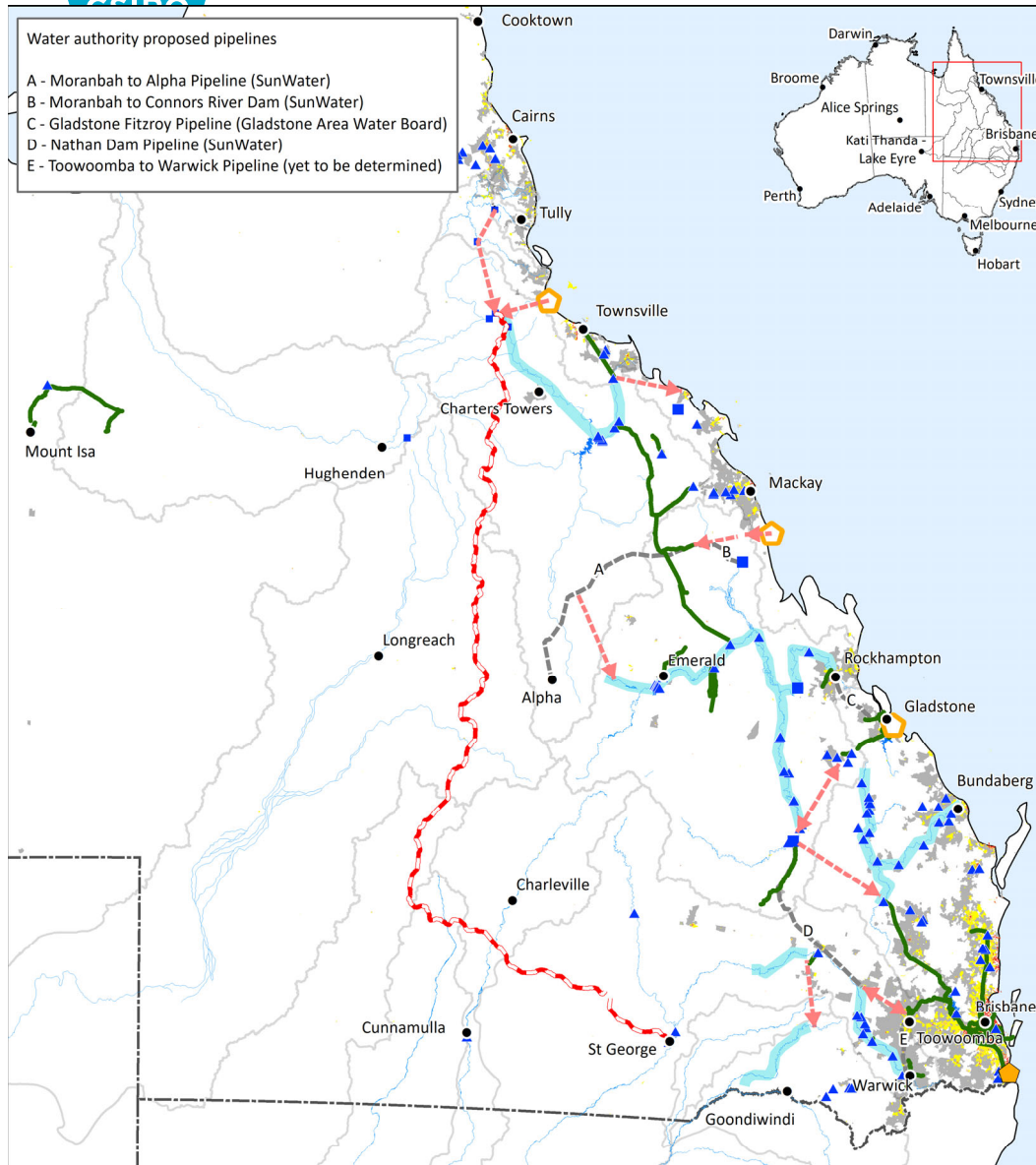


# Regional grids and urban/industrial water security

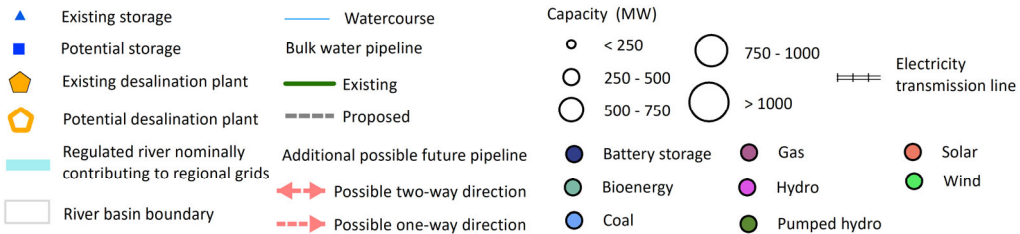
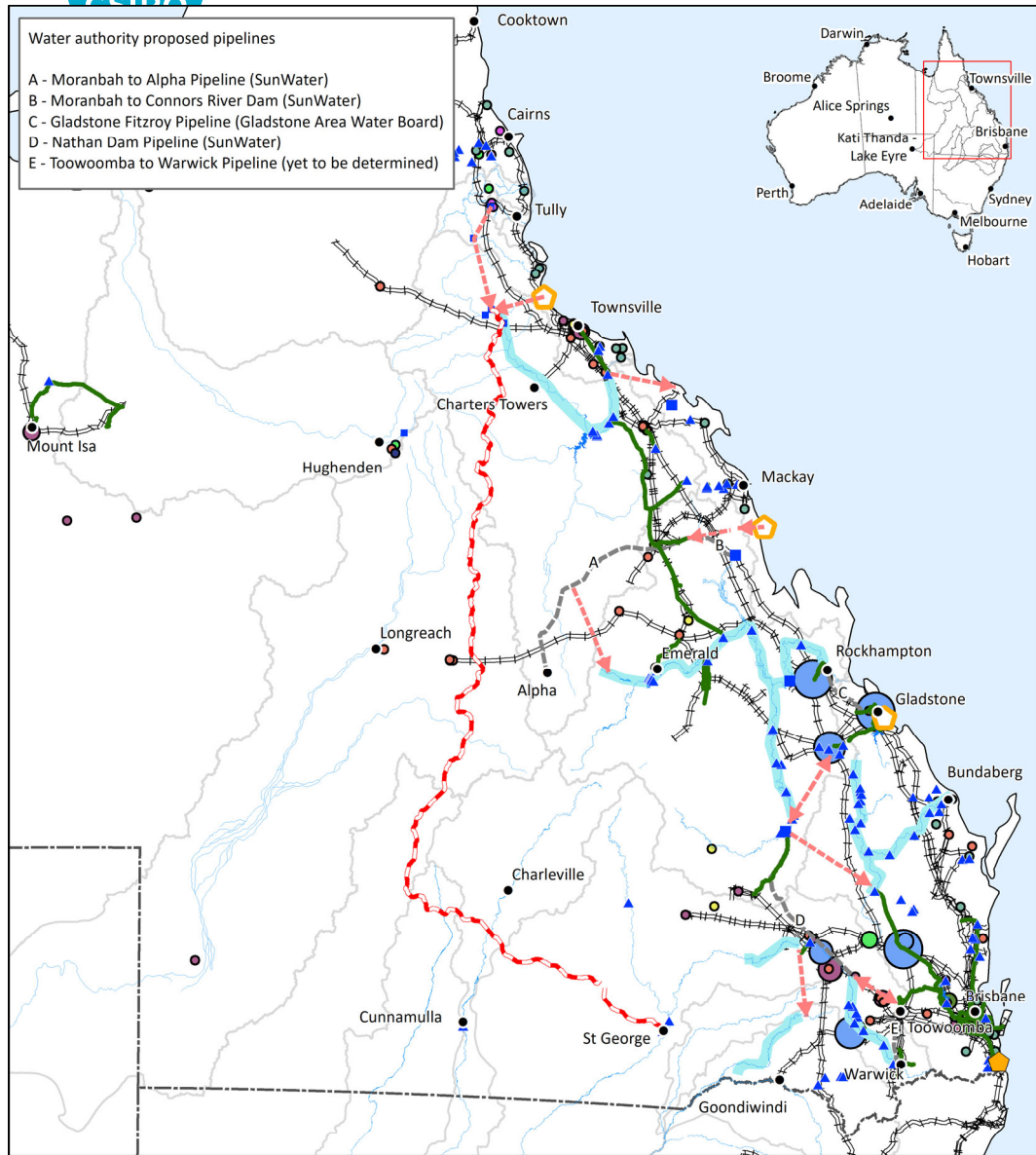




Key network  
enablers –  
transportation  
infrastructure



Key network enablers – regional workforce



Key network  
enablers –  
energy  
infrastructure





## Southern and Darling Downs Regional Water Assessment kicks off

Published Wednesday, 28 July, 2021 at 07:24 PM

Minister for Regional Development and Manufacturing  
The Honourable Glenn Butcher

Better support for regional water

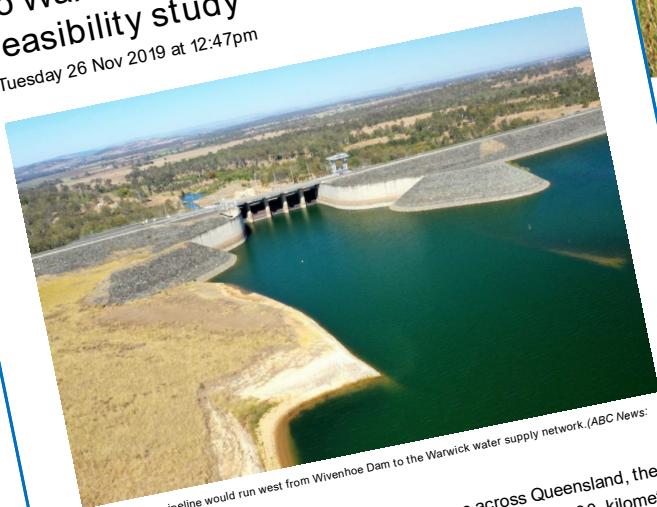
## Mayor Antonio welcomes State Govt plan for Darling Downs water assessment

Local 22 Dec 2020 10:14 am AEDT



## Water pipeline from Wivenhoe Dam to Warwick subject to \$1m feasibility study

Tuesday 26 Nov 2019 at 12:47pm



The proposed pipeline would run west from Wivenhoe Dam to the Warwick water supply network. (ABC News: Col Hertzog/none)

As the severe drought continues to wreak havoc across Queensland, the State Government will investigate the possibility of building a 90-kilometre pipeline from South East Queensland to the Southern Downs to top up the drinking water supply for people in and around Warwick.

The plan is for a pipeline to link Wivenhoe Dam to Warwick's Leslie Dam across an 87-kilometre expanse of countryside at a cost of up to \$90 million.

Queensland Premier Annastacia Palaszczuk said \$1 million is being made

Minister for Water

economic growth and ensure local urban water supplies government kicked-off the Southern and Darling

will take a holistic approach towards water Southern Downs, Goondiwindi and Toowoomba

levering on its commitment to improve water

nal Queenslanders as we continue to Mr Butcher said.

our promise to explore ways to unlock the

Communities said agriculture would

omic Recovery Plan," Mr Furner said.

the pandemic, and it will continue to be

g local council representatives,

about the opportunity.

unlock the economic potential of

the Southern & Darling Downs

on and we welcome local

with us."

ng knowledge and efforts as

ea as well as compiling a

knowledge."

food bowls of

2021.

# Interconnected regional grids

# Interconnected regional grids

