

Values, priorities and decision making



```
graph TD; A[Values, priorities and decision making] --> B[What is the role of the regional CMA in water management and climate adaptation?]; B --> C[How are values represented in current strategy documents?];
```

What is the role of the regional CMA in water management and climate adaptation?

- Qualitative analysis of 22 semi-structured interviews with waterway managers

How are values represented in current strategy documents?

- Literature review of existing strategies from the region

Study 1. Interviews

- Qualitative analysis of waterway managers
- 22 semi-structured interviews
- Transcribed and coded for emerging themes
- Inductive/deductive analysis



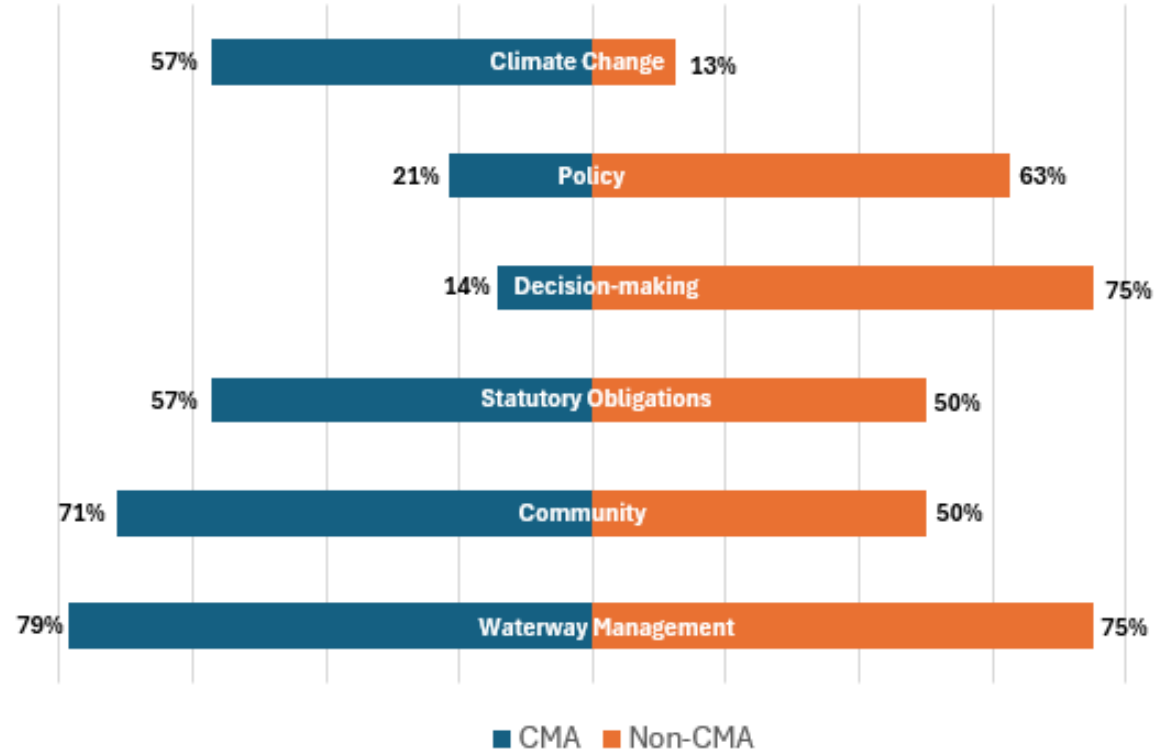
Key Findings

Non-CMA less likely to report CMA R&R regarding climate change.

Non-CMA more likely to report CMA R&R related to policy and decision-making

CMA staff appear to identify more with operational, on-ground delivery, while external stakeholders place greater emphasis on the CMAs' strategic decision-making and policy roles

CMA Roles & Responsibilities



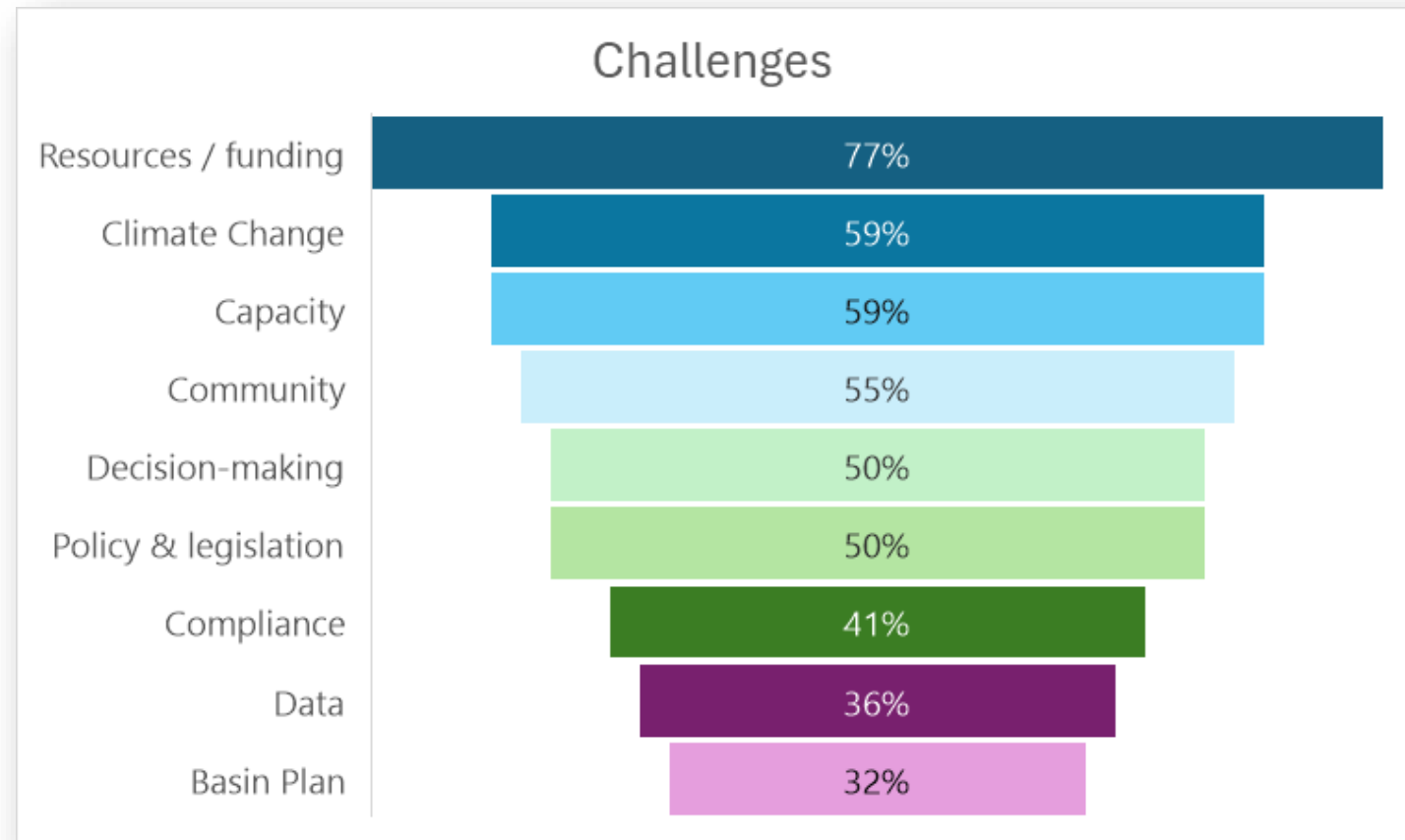
Key Findings

“One of our issues is we're not resourced unless we have been funded through a project.”

“I think we've got less time to talk to the community ... so much more of our time is doing paperwork... and filling out this report.”

“A very small portion of the community see what we do and understand what we do and have that connection. The broader community wouldn't have a clue.. They just think we're another bureaucracy.”

“We're at the bottom of the funding bucket.”

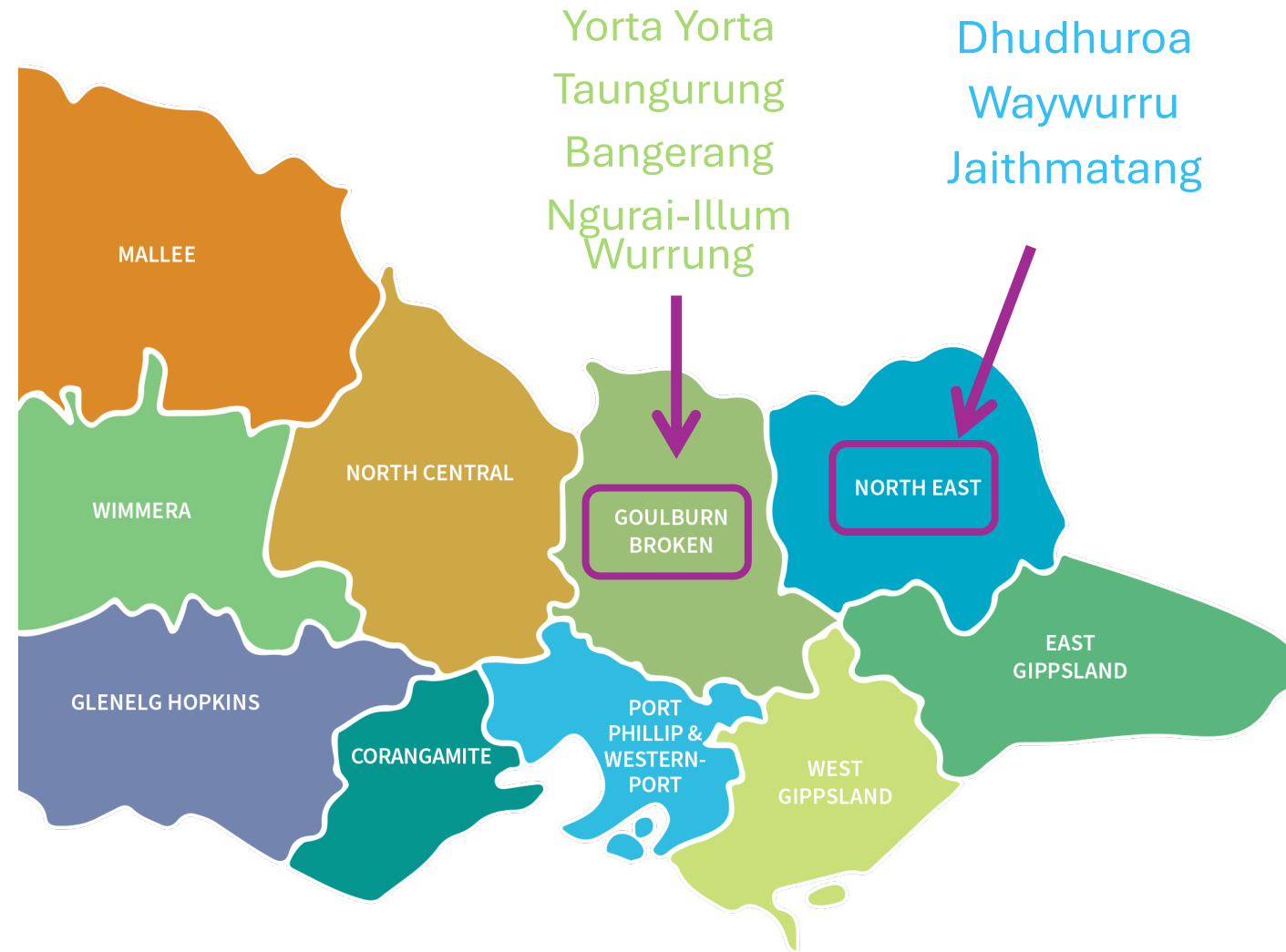




Study 2. Lit Review

- The qualitative analysis of 19 key documents relevant to river catchment management in Northern Victoria
- Documents were selected based on their relevance to water management in the region
- Subcategories for coding themes were based on the existing themes in documents:
economic, environmental, social, and First Nations

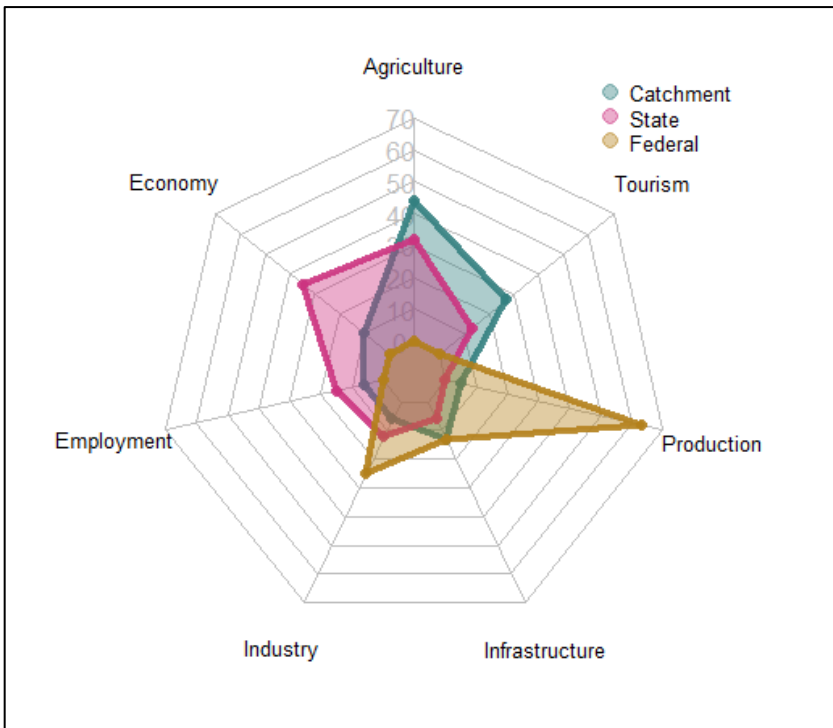
The traditional lands of:



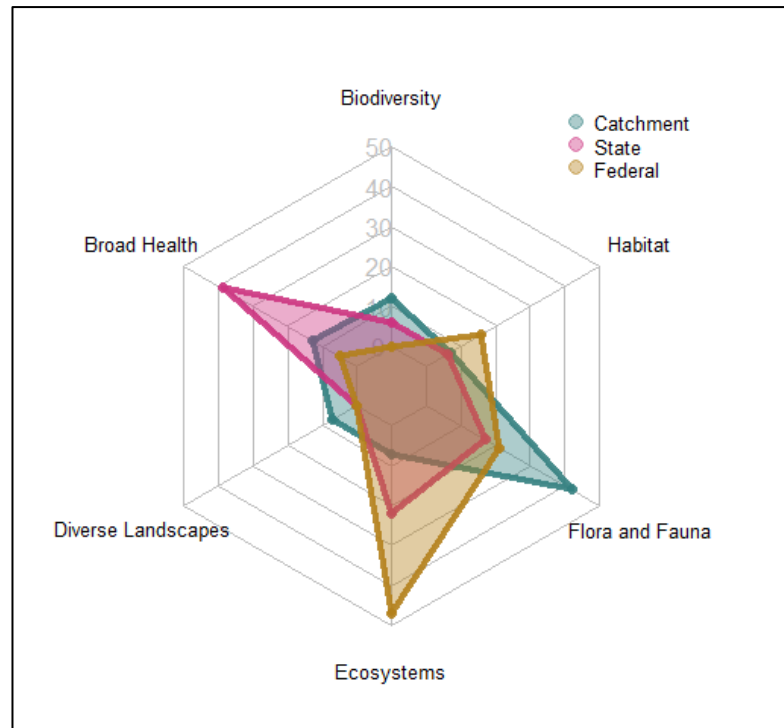
Key Findings

All documents refer in some way to Economic, Social, Environmental or Cultural values. However, significant differences emerge within the values presented by differing governance levels

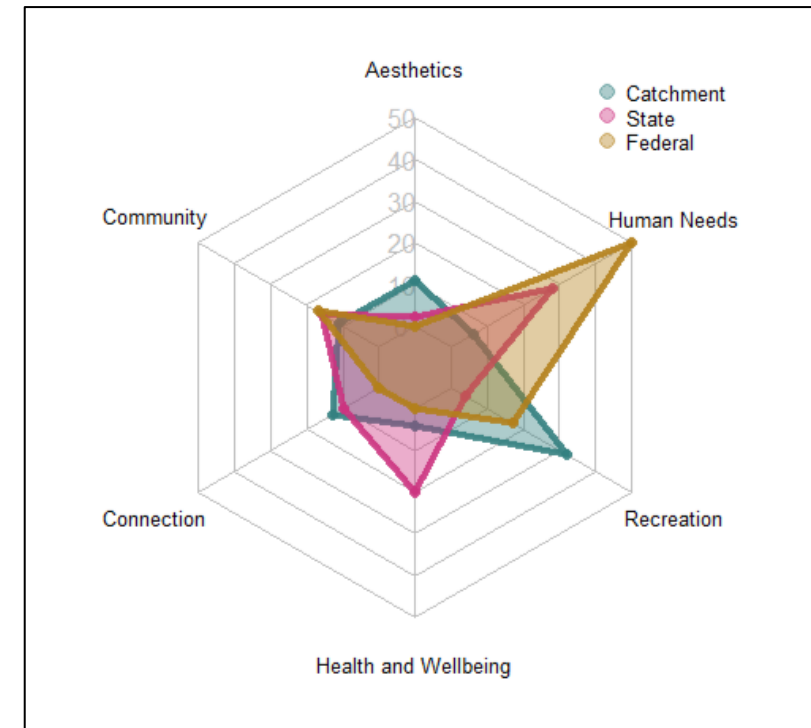
Economic Values



Environmental Values



Social Values



Key Findings

No definition of values

Unclear what values are being prioritised

No values typology or framework

Blurred distinctions: values, critical attributes, benefits, services

Values in decision-making absent

Unclear how values inform decisions around objectives and priorities.

Values categorised into themes

Categorisation implies a zero-sum game.

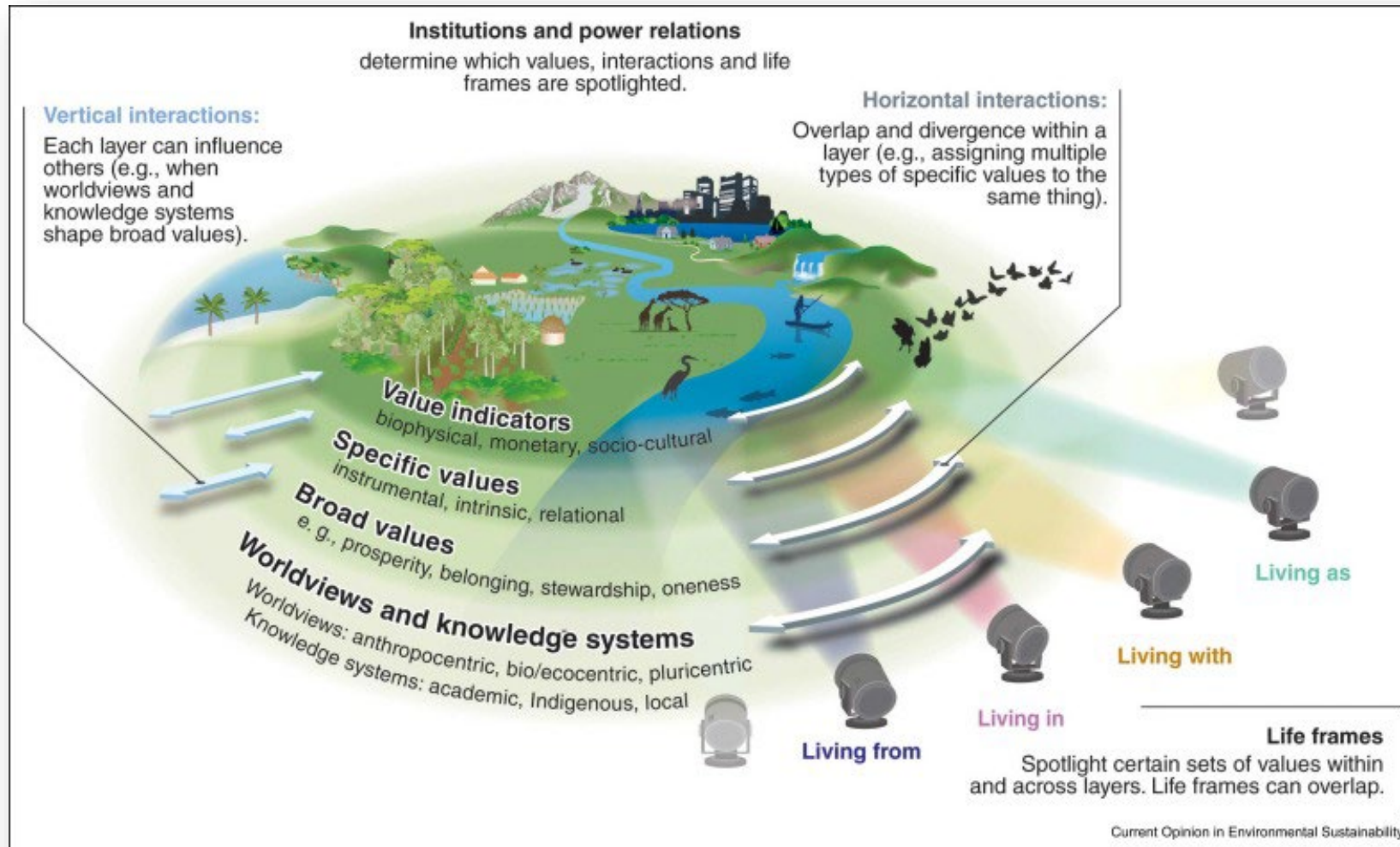
Cultural Values often vague and separated

Isolation of values and their relationality with other categories

Recommendations

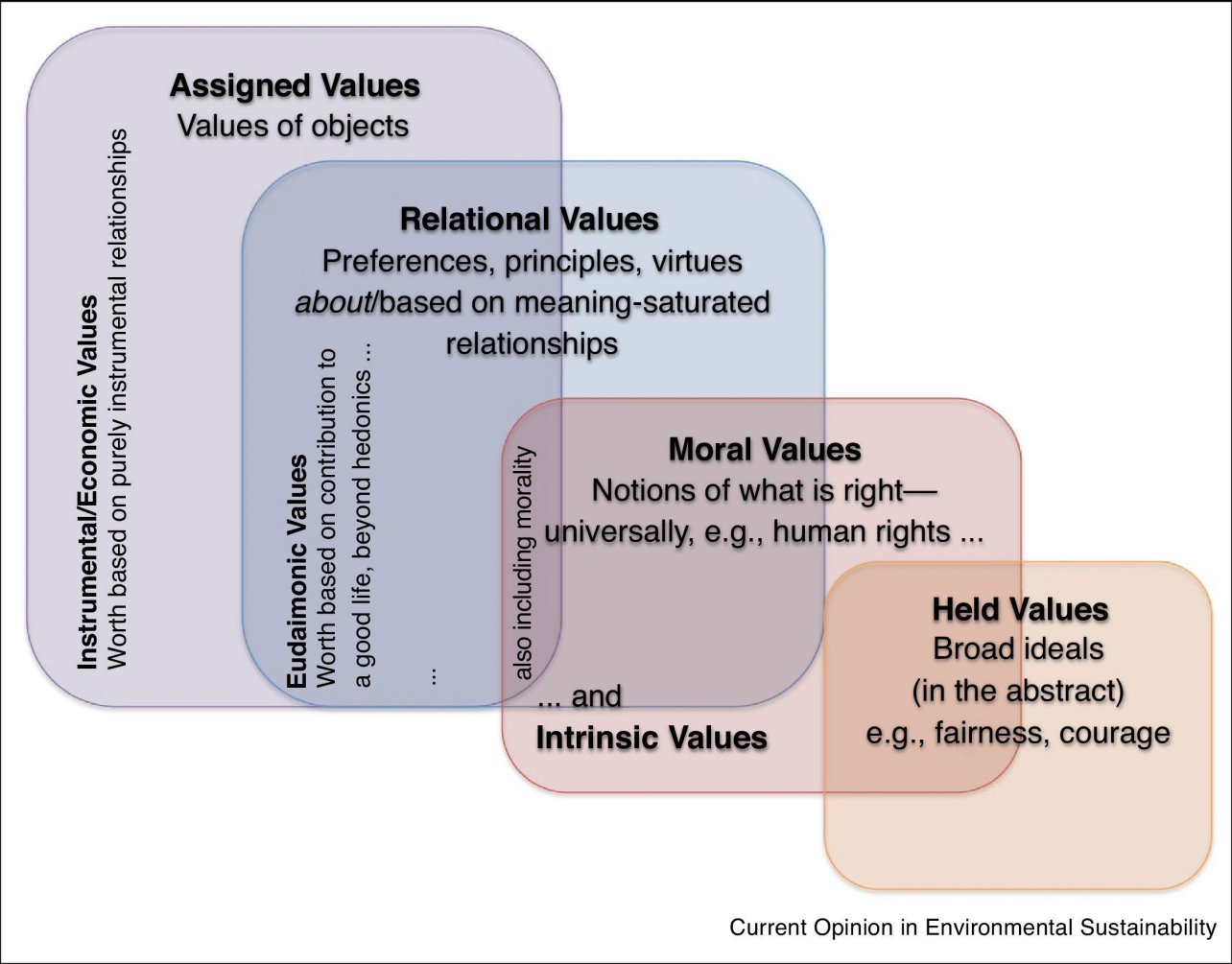
- Develop a nuanced and integrated approach to defining and applying values in management strategies – values need clear definitions and consistent frameworks.
- Consider the inclusion of relational values for creating equitable and effective policies.
- Investigate the causes of differing perceptions regarding CMAs' role in climate adaptation.
- Adopt a hybrid decision-making approach - combine local responsiveness with structured, high-level frameworks to balance the benefits of regional autonomy with broader policy coherence.

Values Frameworks





Relational Values



Chan, K. M. A., et al. (2018). "Editorial overview: Relational values: what are they, and what's the fuss about?" Current Opinion in Environmental Sustainability **35: A1-A7.**



Attributes of Relationality: Indigenous Australian Values

