

3D CFD HYDRAULICS

Australian Water School

Dr Colin Terry, 17 July 2024

We own. We operate. We consult.

MESH FOR 2D AND SEMI-3D

SEMI-3D TUFLOW FV

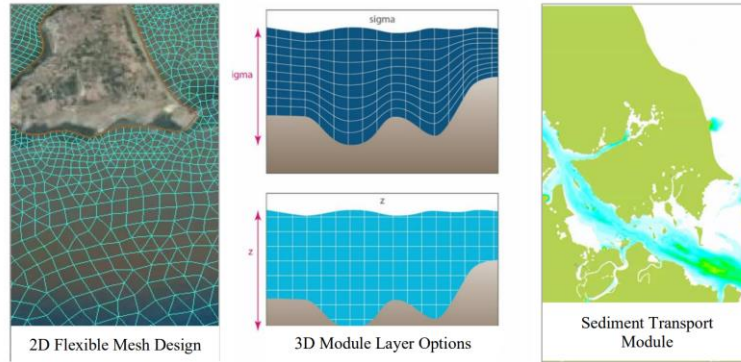


Figure 1-1 Schematisation of Common TUFLOW Flexible Mesh Solver Features

1D/2D TUFLOW HPC HEC-RAS

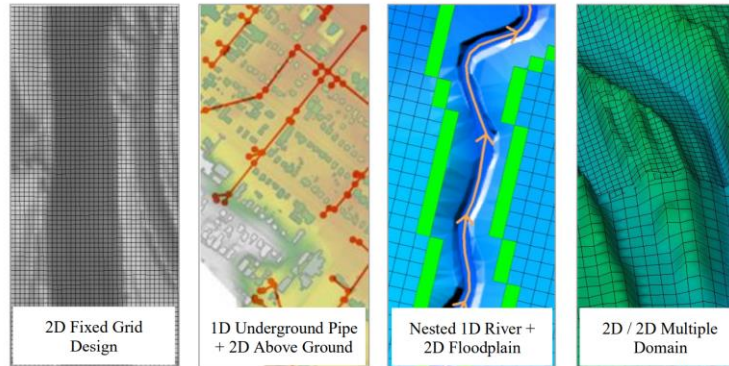
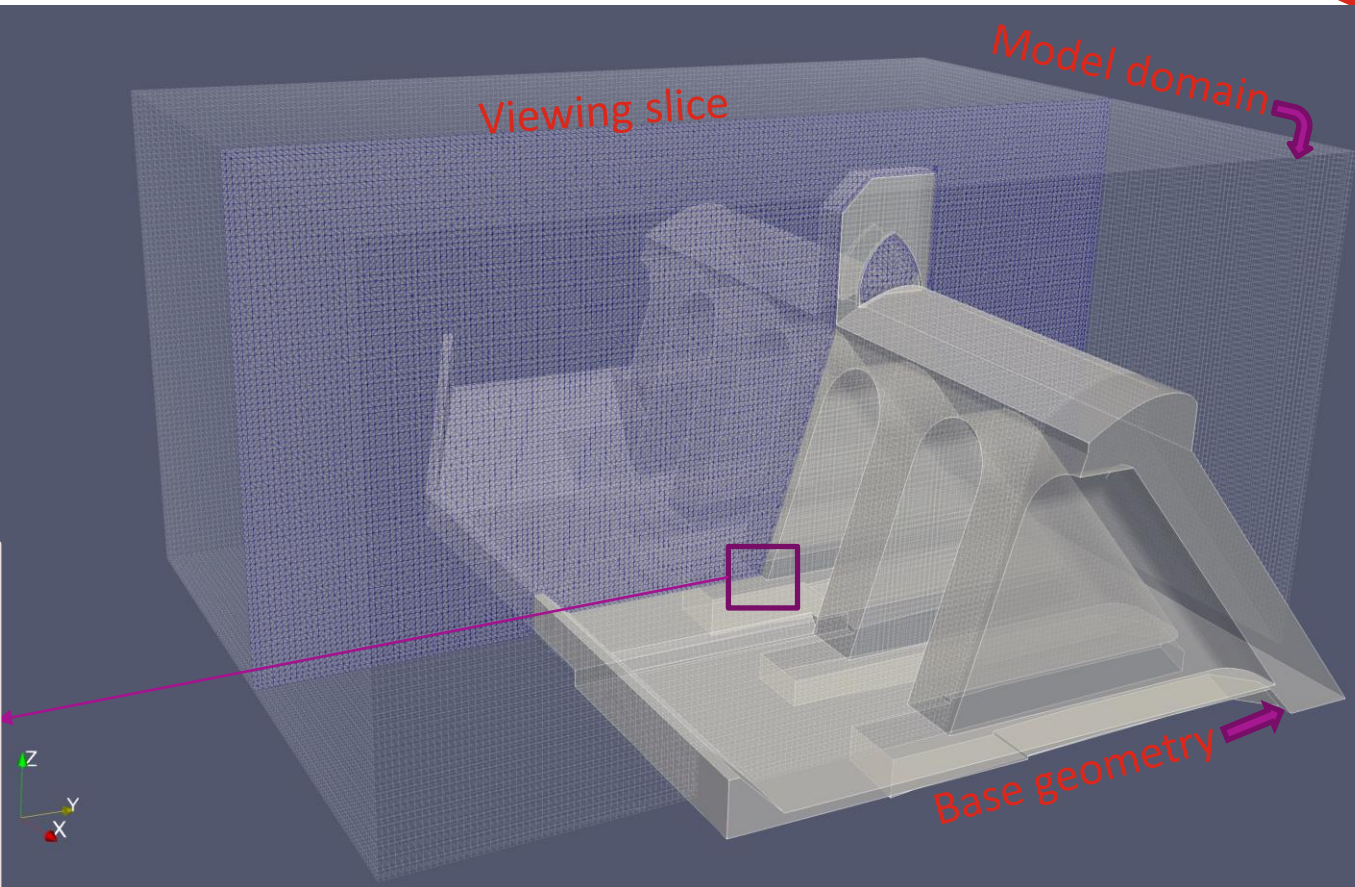
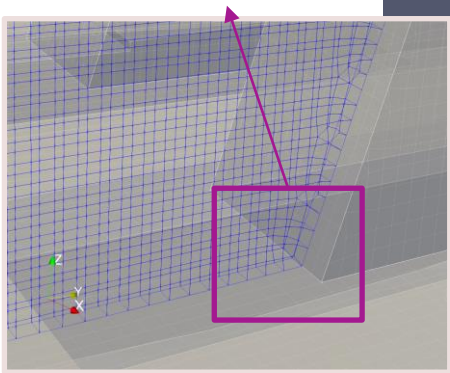
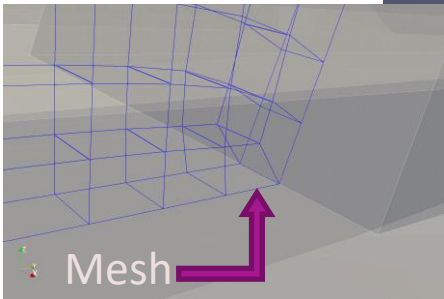


Figure 1-2 Schematisation of Common TUFLOW Fixed Grid Solver Features

BMT (2020) "TUFLOW FV User Manual"

MESH FOR CFD



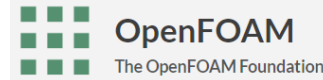
WORKFLOW

OpenFOAM



Two main flavours

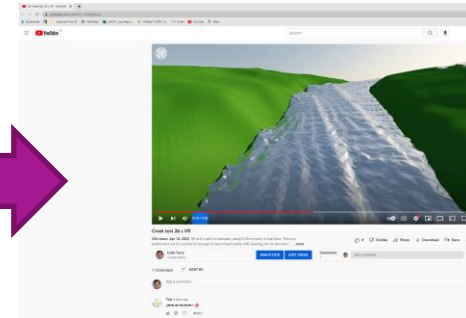
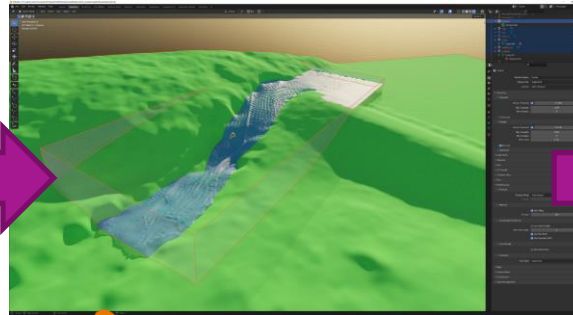
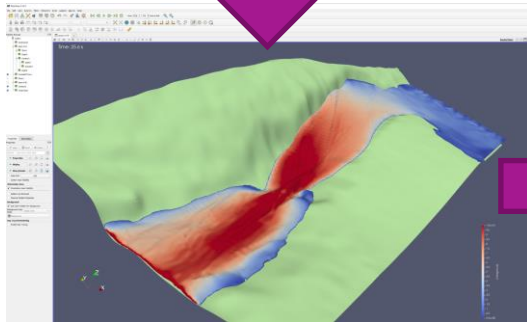
OpenFOAM® <https://www.openfoam.com/>



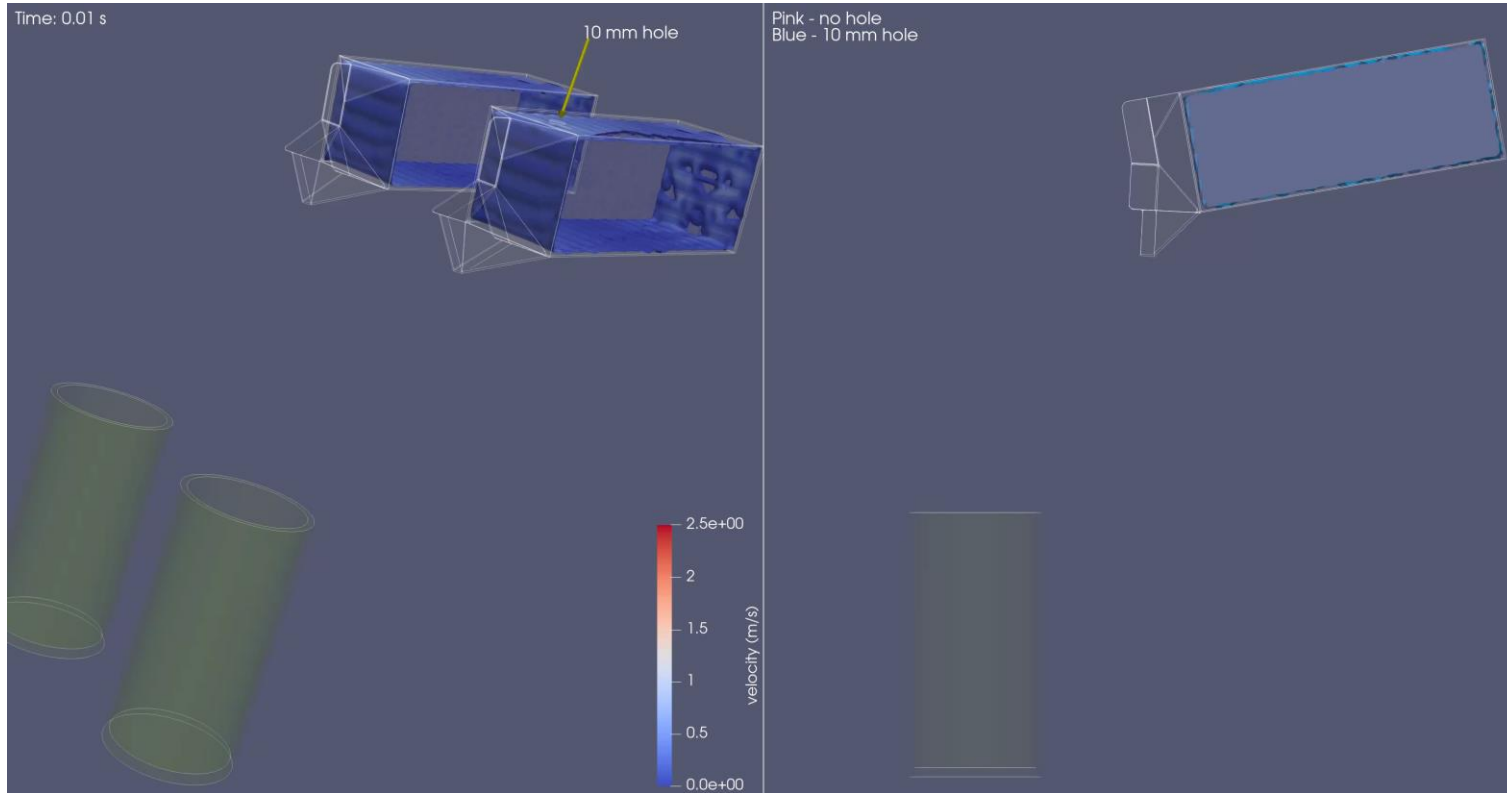
<https://www.openfoam.org/>

Three operating systems:

Windows, Linux, MacOS



NEXT STEPS: GET MORE CURIOUS ABOUT WATER



QUESTION?

<https://www.entura.com.au/what-is-the-best-way-to-model-complex-water-structures/>

Time: 0.00 s

